

Fig 1 Location Plan

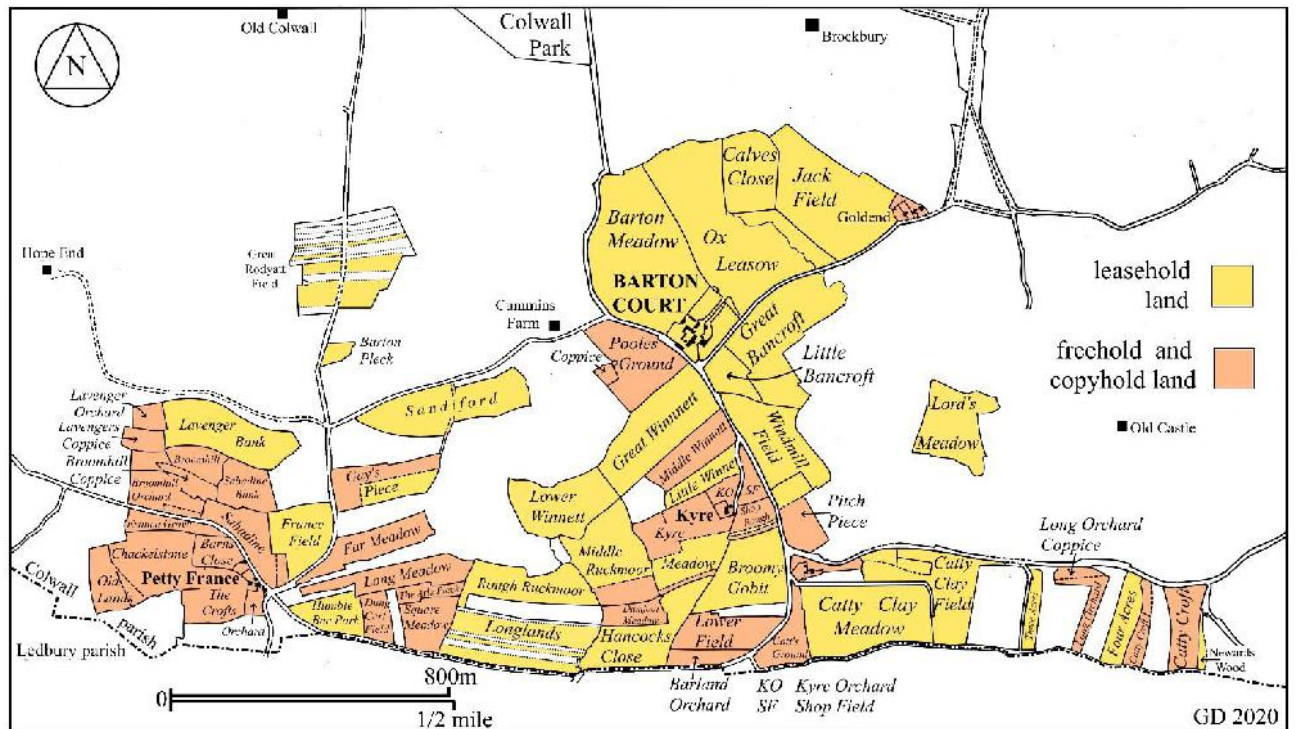


Fig 2 Plan of Barton Court estate 1842



Fig 3 Extract from Isaac Taylor's map of Herefordshire, 1754



Fig 4 The Prichard/Tempest house, 1796



Fig 5 A circle of c 36 acres drawn around Hope End I, Google Earth



Fig 6 An alternative for the position of Hope End Park, Google Earth



Fig 7 The principal elevation (sout-east) of the Moulton-Barrett house



Fig 8 The north-east elevation of the Moulton-Barrett house

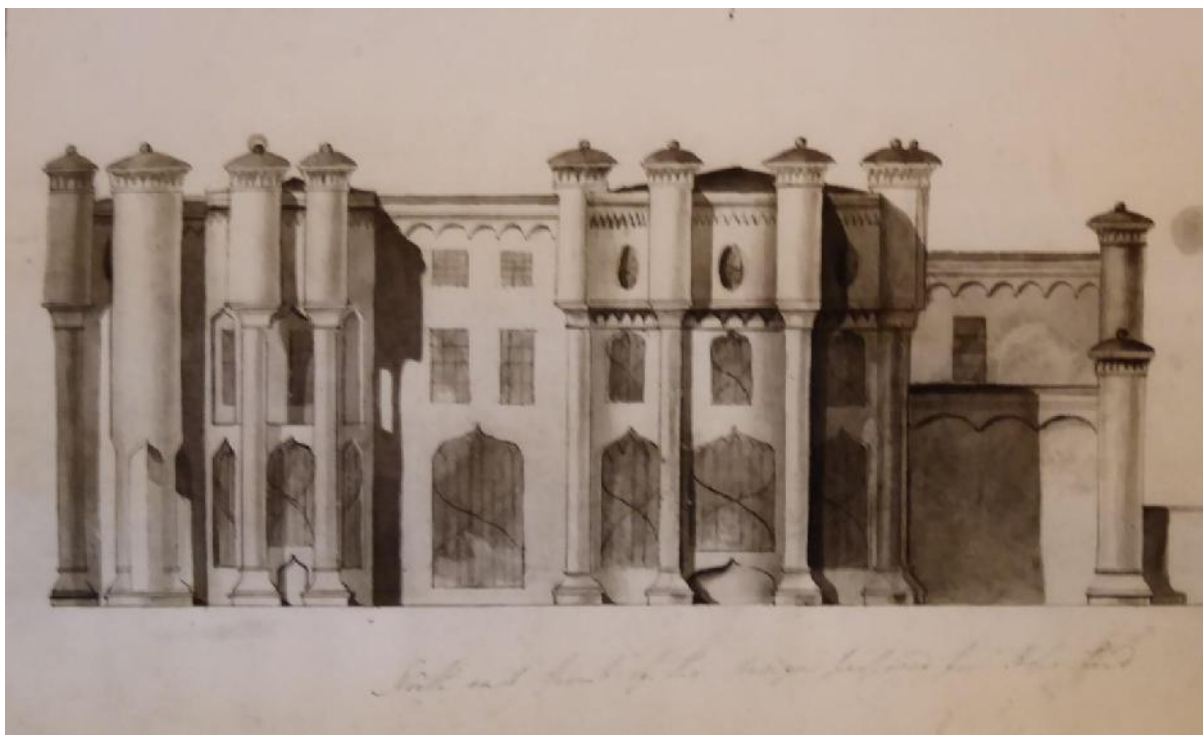


Fig 9 Loudon's drawing of the north-east elevation, present location unknown
Photographic copy courtesy of Patricia Hegarty



Fig 10 Loudon's drawing of the south –east elevation, present location unknown
Photographic copy courtesy of Patricia Hegarty



Fig 11 Loudon's design for house and stable at Garth, Montgomeryshire, 1809-10

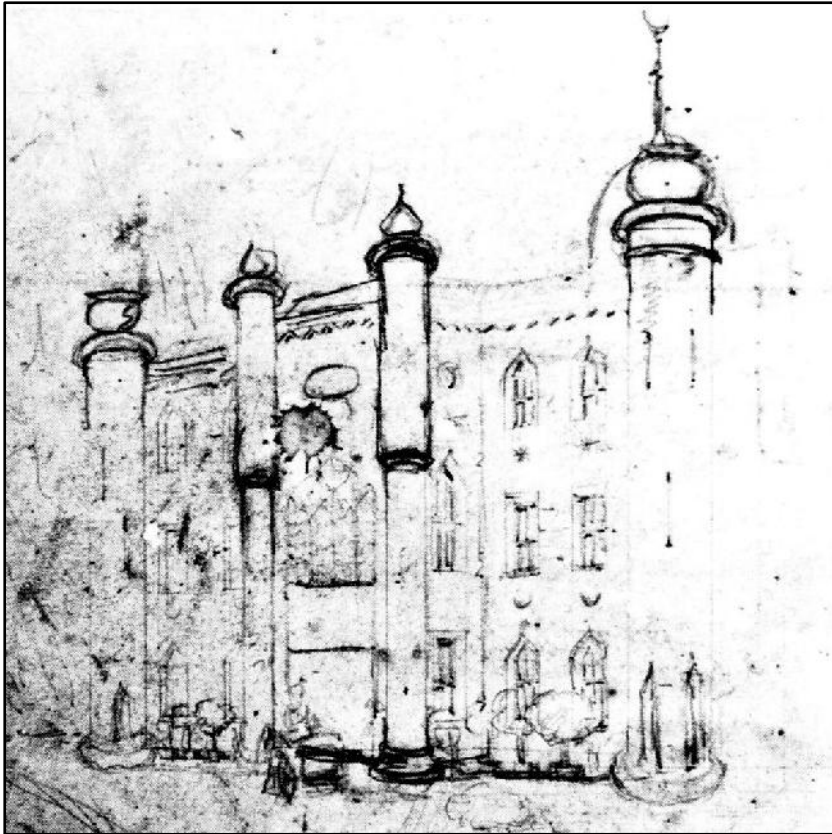


Fig 12 Loudon adds ogee arches to the ground and second floor windows
Present location unknown, published in *The Browning's Correspondence*, Vol 1,
(1984) opposite p. 26



Fig 13 The rear of the stable block, 1947
Courtesy of Patricia Hegarty



Fig 14 The alternative south entrance to the stable yard and the rear of the demolished Moulton-Barret house flanked by piers with ogee copings

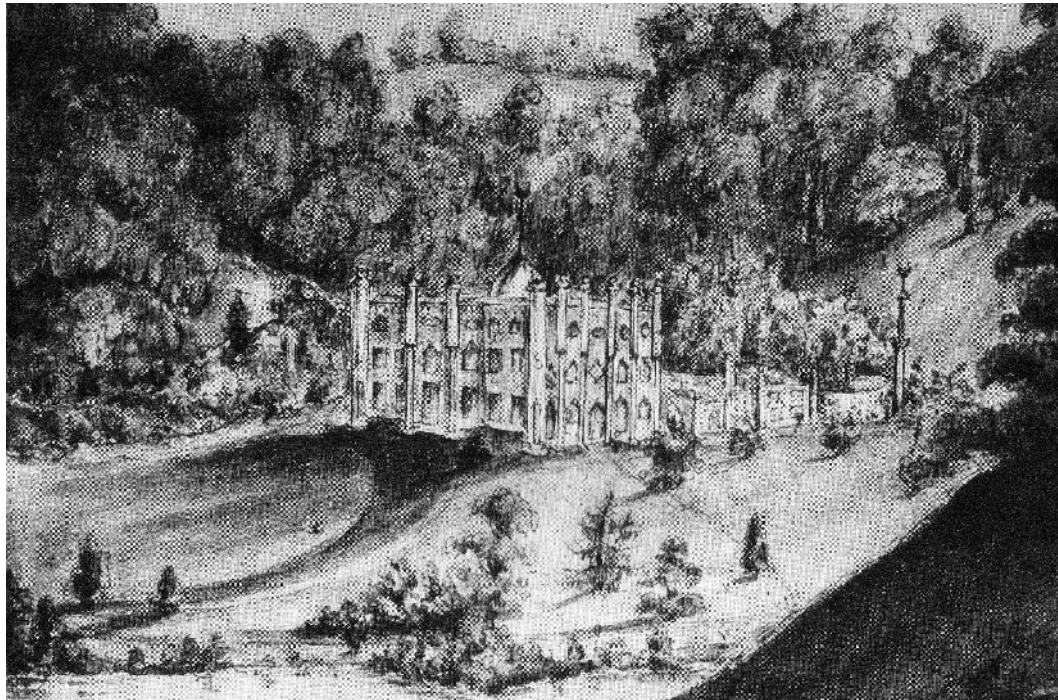


Fig 15 Hope End House from the south-east by Arabella Moulton-Barrett
 Courtesy of Altham Collection, Armstrong Browning Library, Baylor University
 Waco, Texas?



Fig 17 Hope End House from the south-east by a Moulton-Barrett daughter?
 Courtesy of Eton College Library, MS681 04 03



Fig 18 Hope End House from the south-east by a Moulton-Barrett daughter?
 Courtesy of Eton College Library, MS681 04 03



Fig 19 Hope End House from the south-east by Miss Steers from a drawing that belonged to Major Altham
 Courtesy of Eton College Library, MS681 04 03



Fig 20 Hope End House from the east, by Henrietta Barrett-Brown 25 June 1831
 Courtesy of Altham Collection, Armstrong Browning Library, Baylor University
 Waco, Texas, H0106

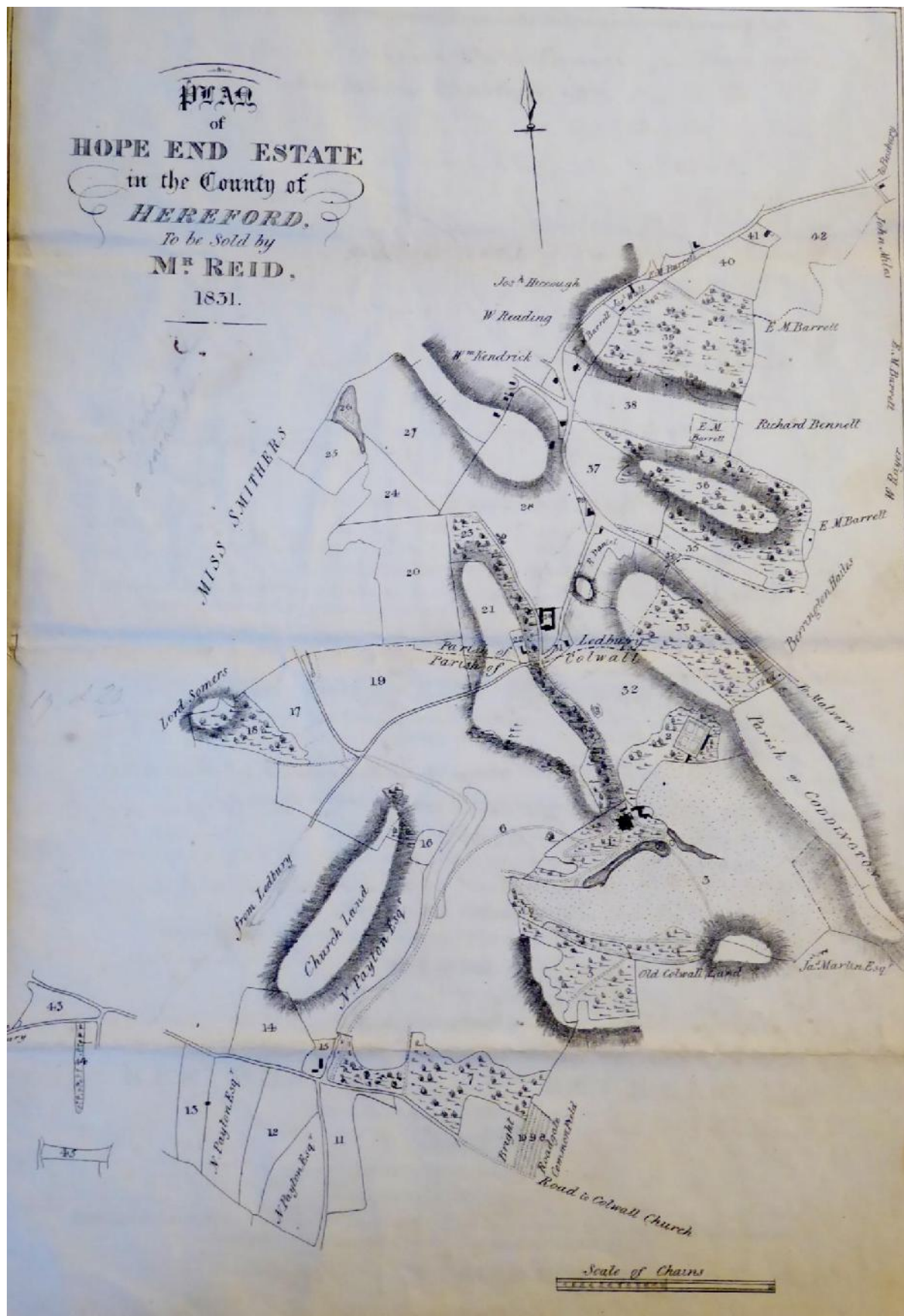


Fig 21 Sale particulars plan of the Hope End estate, 1831; compass point incorrect, north is to the right
 Courtesy of Patricia Hegarty



Fig 22 Detail from 1831 sale particulars plan of the Hope End estate, 1831

HEREFORDSHIRE,

ON THE BORDERS OF WORCESTERSHIRE.

IMPORTANT FREEHOLD & COPYHOLD ESTATE,

A desirable Property for Residence and Investment,
CAPITAL MANSION, WITH OFFICES,
Pleasure Grounds, extensive Garden and Grapery, Farm Buildings, upon a superior principle,
AND UPWARDS OF
FOUR HUNDRED AND SEVENTY-TWO ACRES
OF EXCELLENT MEADOW, PASTURE, ARABLE, & WOOD LAND, & HOP GARDEN.

Particulars and Conditions of Sale,
OF THE VERY IMPORTANT

FREEHOLD ESTATE,

With a small Part Copyhold,

HOPE END,

In the Parishes of LEBURY, COLWALT, and CODDINGTON, in the COUNTY OF HEREFORD,
On the Borders of Worcestershire,

About Two Miles from LEBURY, commanding the Romantic Scenery of the MALVERN AND ADJACENT HILLS, with Views from various parts of the Property, highly interesting, and of great extent.

THE HOPE END MANSION

IS ADAPTED FOR THE ACCOMMODATION OF

A NOBLEMAN, OR FAMILY OF THE FIRST DISTINCTION,

Is Pleasantly seated in its own Grounds, having an extensive Lawn in front,

WITH A FINE SHEET OF WATER, FED BY SPRINGS, CASCADE, &c.

And well Stocked with Fish,

AND IS APPROACHED BY AN EXTENSIVE GARRIAGE DRIVE, LEADING THROUGH THE GROUNDS, WHICH ARE LAID OUT IN A PARK-LIKE STYLE, AND WITH ACKNOWLEDGED TASTE.

The Residence is Erected in the Eastern Style of Architecture,

AND MAY JUSTLY BE ESTEEMED

A CHEF-D'ŒUVRE, UNRIVALLED IN THIS KINGDOM.

The Domestic Offices

Are well arranged, and amply supplied with excellent Water;

COMPRISING

COMMODIOUS STABLING & COACH HOUSES, and various other OUT-OFFICES;

THE BEAUTIFUL PLEASURE GROUNDS,

Intersected by extensive Gravelled Walks, include a SHRUBBERY, ornamented with magnificent Tindal Trees, thriving Evergreens, Parterres of Flowers, &c.

AN ALCOVE: PRODUCTIVE WALLED GARDEN, CLOTHED WITH CHOICE FRUIT TREES,

And containing a GRAVEY, &c.

ATTACHED TO THE PROPERTY THERE IS

A WELL-CONSTRUCTED FARM YARD,

With BAILIFF'S HOUSE, and substantial AGRICULTURAL BUILDINGS, planned in a superior style,

AND THE WHOLE ESTATE COMPRISING

SUNDRY COTTAGES, WITH GARDENS,

CONTAINS UPWARDS OF

FOUR HUNDRED AND SEVENTY-TWO ACRES

OF

Excellent Grass and Meadow, Arable, and Wood Land, Hop Garden, and Plantation,

In a fine thriving State, the Soil of a very excellent Quality, producing fine Grain, Hay, &c.

AND FORMS A MOST ALLEGIBLE PROPERTY FOR RESIDENCE AND INVESTMENT,

In an excellent Neighbourhood, the Country abounding with Game, and enjoying the Beauties of the Malvern Woods, with its Fertile Scenery.

HOPE END has been justly considered to vie with EASTNOR CASTLE,

AND MAY BE PRONOUNCED THE CHIEF ORNAMENT OF THE SURROUNDING COUNTRY:

To be Sold by Auction,

By Order of the Mortgagees under a Power of Sale,

BY MR. REID,

Son-in-Law and Successor to the late

MR. JOHN ROBINS,

OF WARWICK HOUSE, REGENT STREET,

AT GARRAWAY'S COFFEE HOUSE, CHANGE ALLEY, CORNHILL.

On THURSDAY, 25th of AUGUST, 1831, at Twelve o'Clock.

The Estate is distant from MALVERN about Four Miles, and the Canal from LEBURY to GLOUCESTER affords every facility for the Conveyance of Produce to that City and the neighbouring Towns; and this will be considerably extended by the intended Continuation of the Canal to HEREFORD. There are Coaches daily to and from the Metropolis.

The Mansion to be viewed by Tickets. Particulars may be had of JAMES HOLBROOK, Esq. Solicitor (who will grant Tickets), and at the Feathers Inn, Leabury; Swan, Ross; City Hotel, Hereford; the Foley Arms, and Belle Vue, Great Malvern; of Mr. BENTLEY, and at the Star and Hop Pole Inns, Worcester; Plough, Cheltenham; Angel, Oxford, and in London, of Messrs. FRASER & NEAVE, New Bank Buildings; at GARRAWAY'S; and of Mr. REID, No. 170, Regent Street, where a Plan of the Estate may be seen, and Tickets for viewing may be had.

Fig 23 Page from sales particulars, Hope End estate, 1831
Courtesy of Patricia Hegarty



Fig 24 Detail from 1842 Tithe map of Colwall, 1842 showing the Hope End estate
Courtesy of the National Archives, IR30/14/52



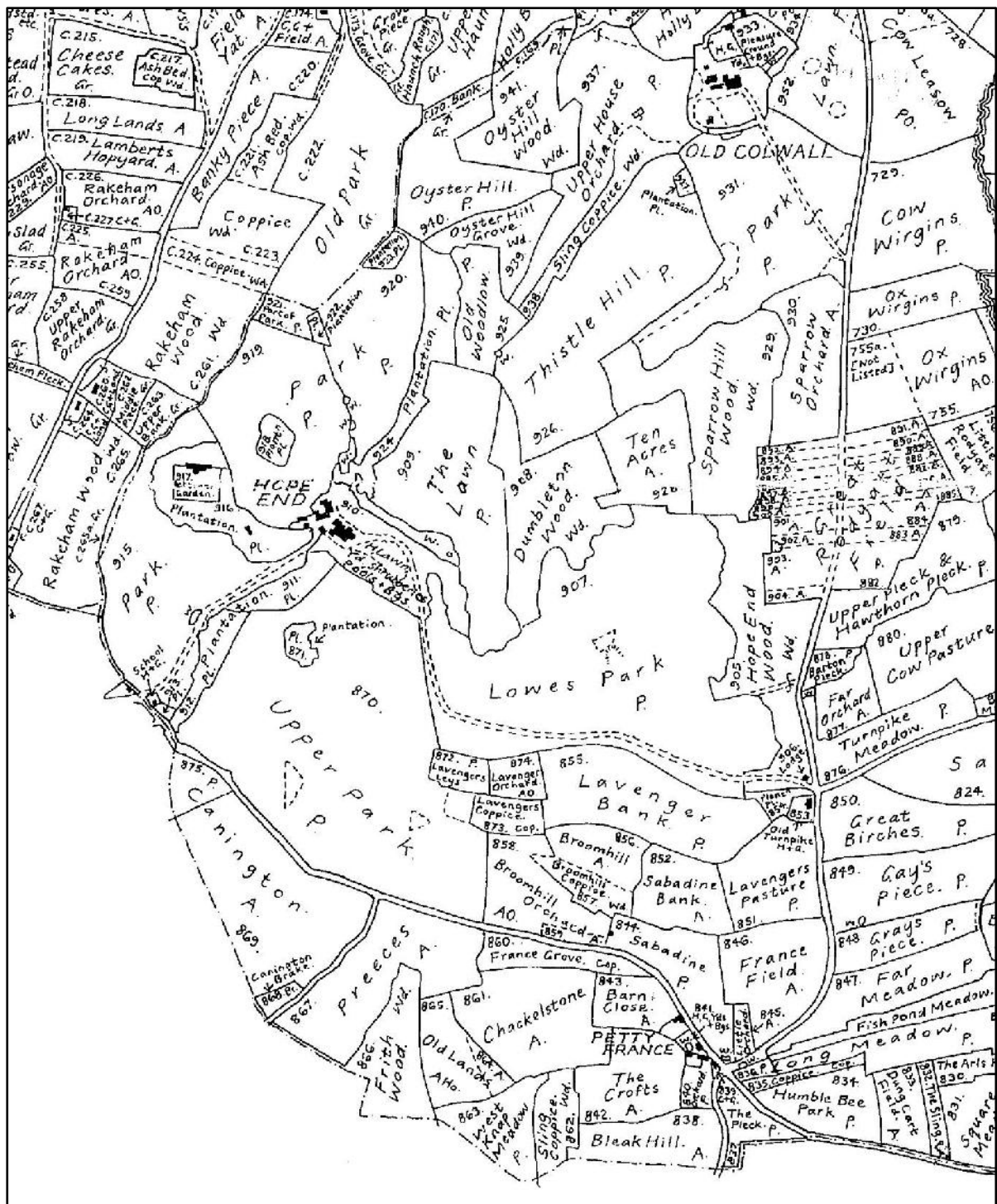
Fig 25 Detail from 1842 Tithe map of Colwall, 1842
Courtesy of the National Archives, IR30/14/52

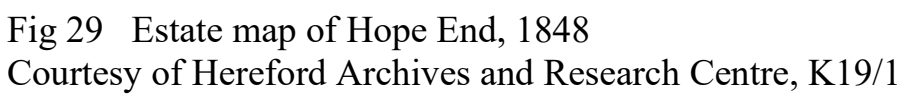


Fig 26 Detail from 1842 Tithe map of Colwall, 1842, focussing on Hope End I
Courtesy of the National Archives, IR30/14/52



Fig 27 Detail from published Tithe map of Colwall, 1842
Courtesy of Hereford Archives and Research Centre, R41 and AK40/44





Courtesy of Hereford Archives and Research Centre, K19/1



Fig 30 The former school room at the Upper Lodge, November 2021



Fig 31 Hope End House from the east, watercolour by Philip Ballard, c. 1860s?
Courtesy of Patricia Hegarty



Fig 32 Hope End from the south-east, watercolour by Philip Ballard, c. 1860s?
Courtesy of Patricia Hegarty

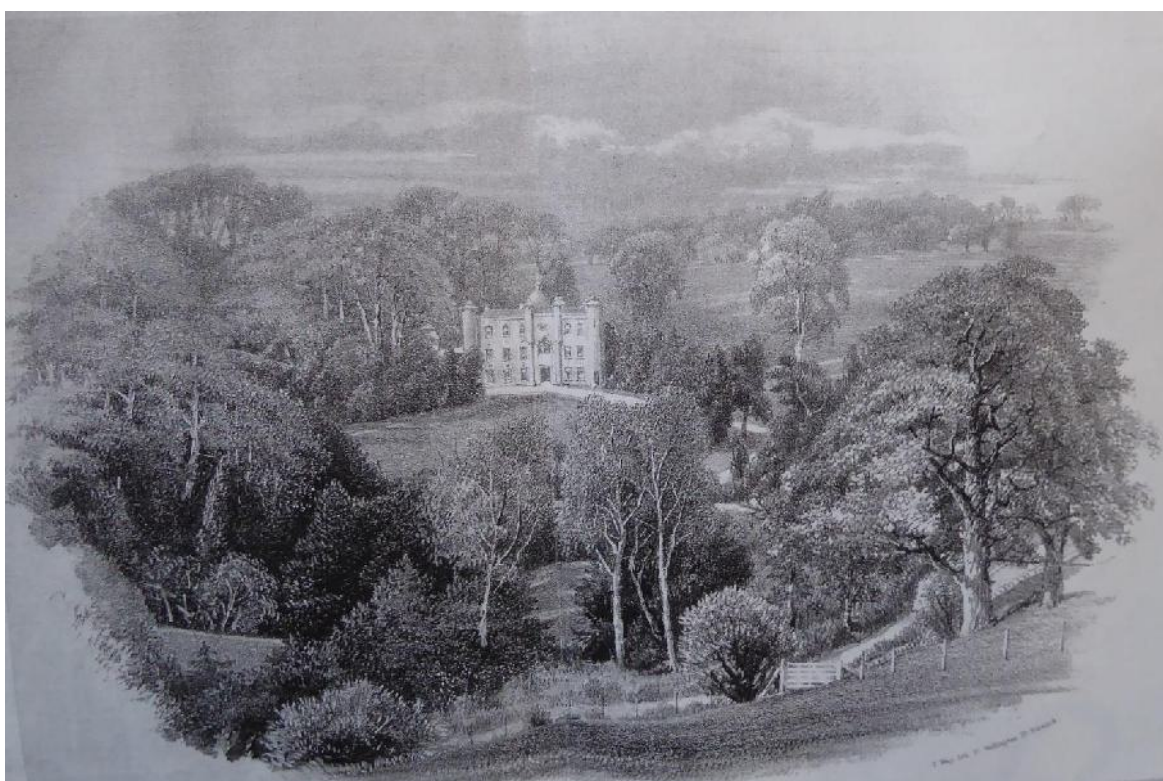


Fig 33 Engraving of south-east elevation of Hope End House by Thomas Way
Courtesy of Mike Lewis



Fig 34 Detail from the 1867 sale particulars plan of the Hope End estate
 Courtesy of British Library, Map 137.a.1. (8)

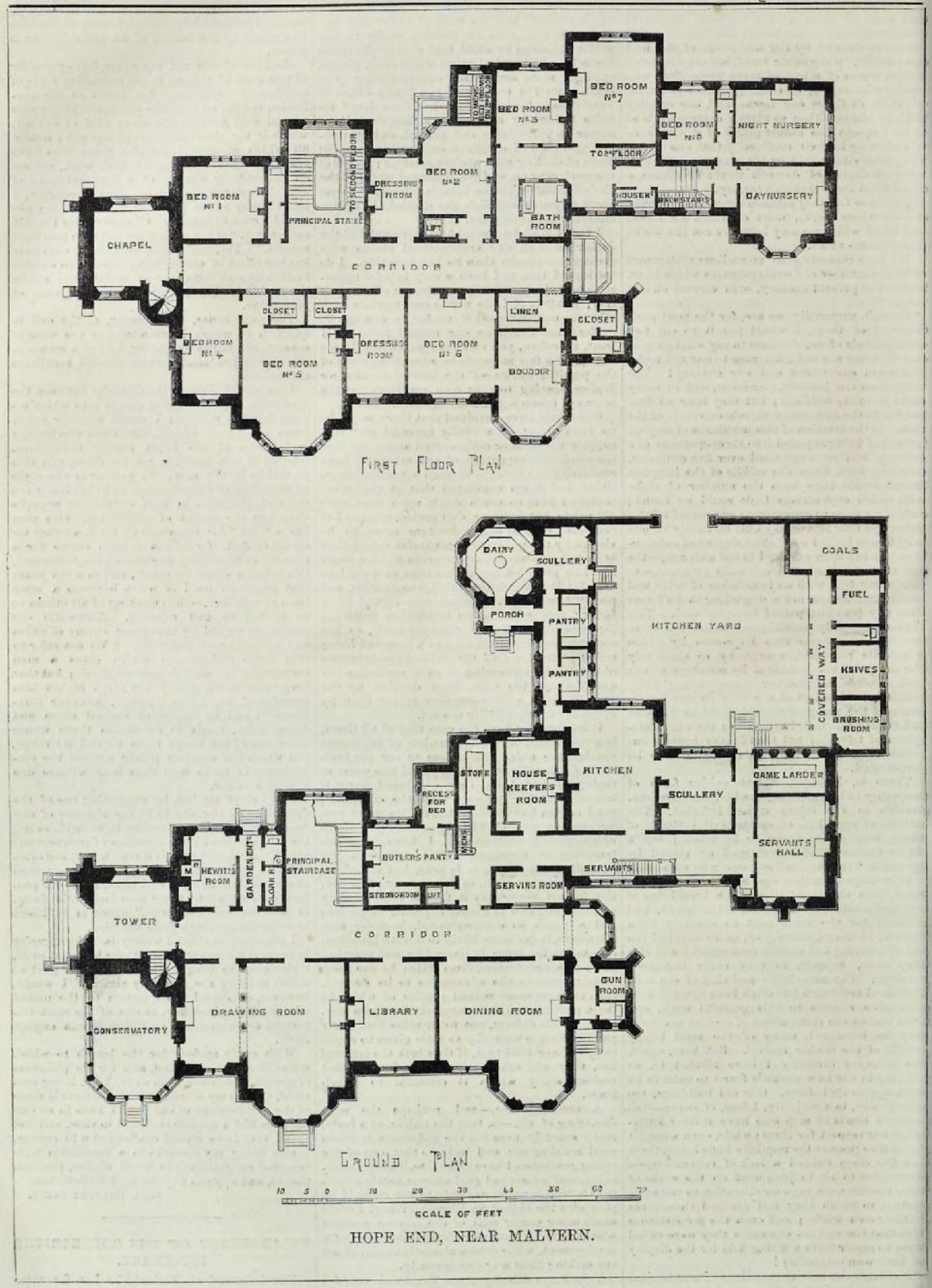


Fig 35 Ground and first floor plan of Hope End House II, 1871
 Author copy

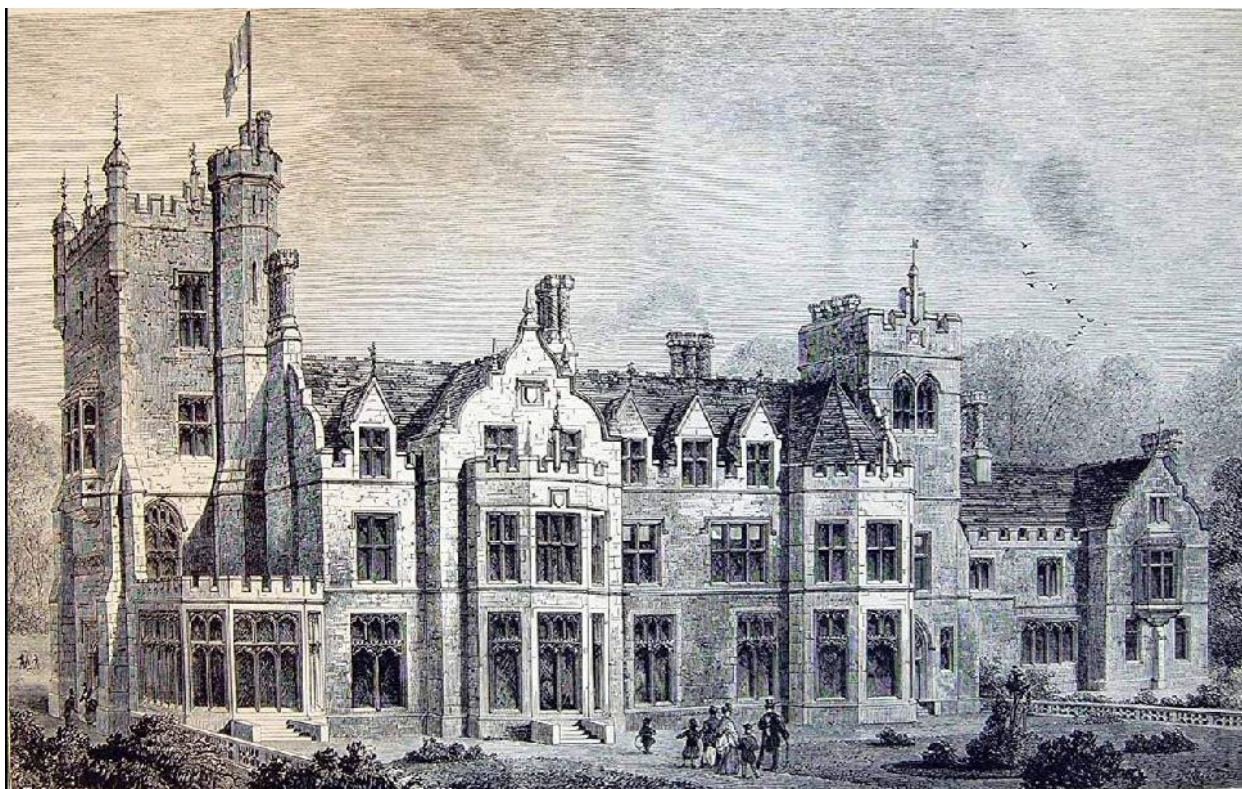


Fig 36 Front elevation of the new Hope End House, 1871
Author copy

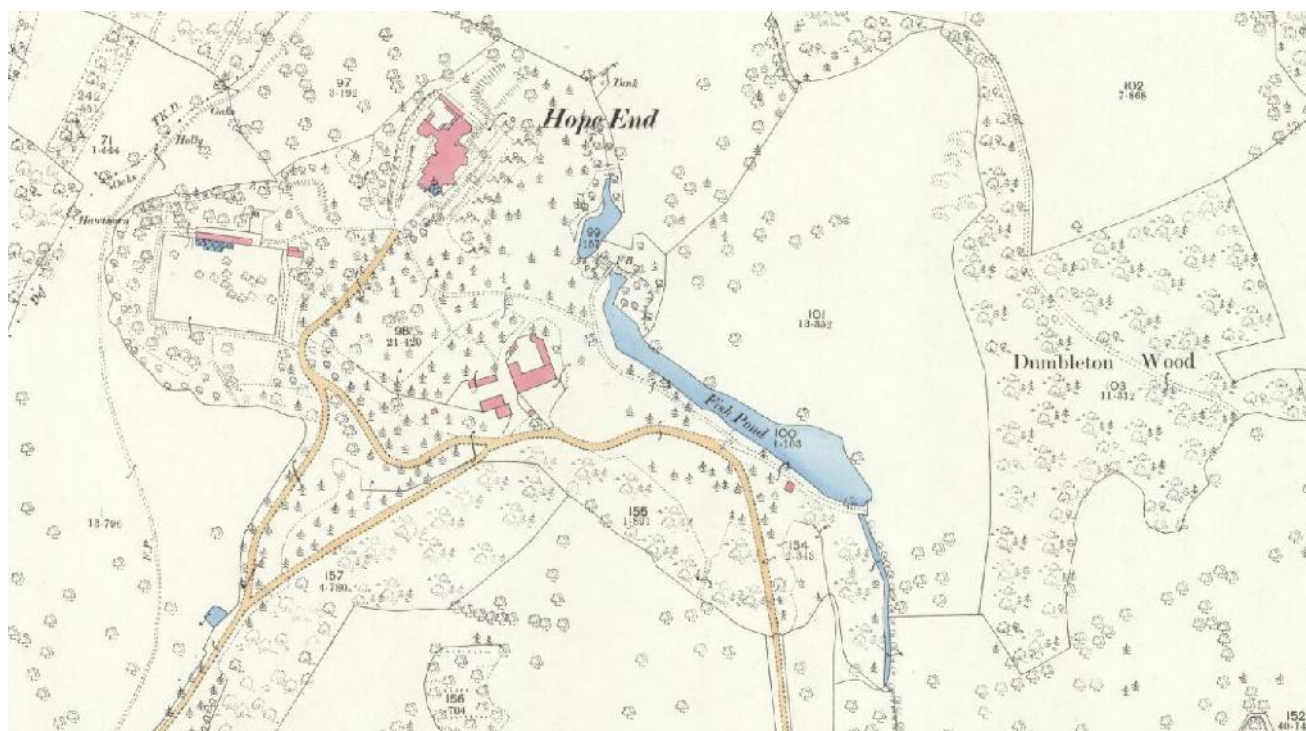


Fig 37 Detail from OS 1:2500 scale map, Herefordshire XXXVI.9 surveyed 1885
Courtesy of National Library of Scotland

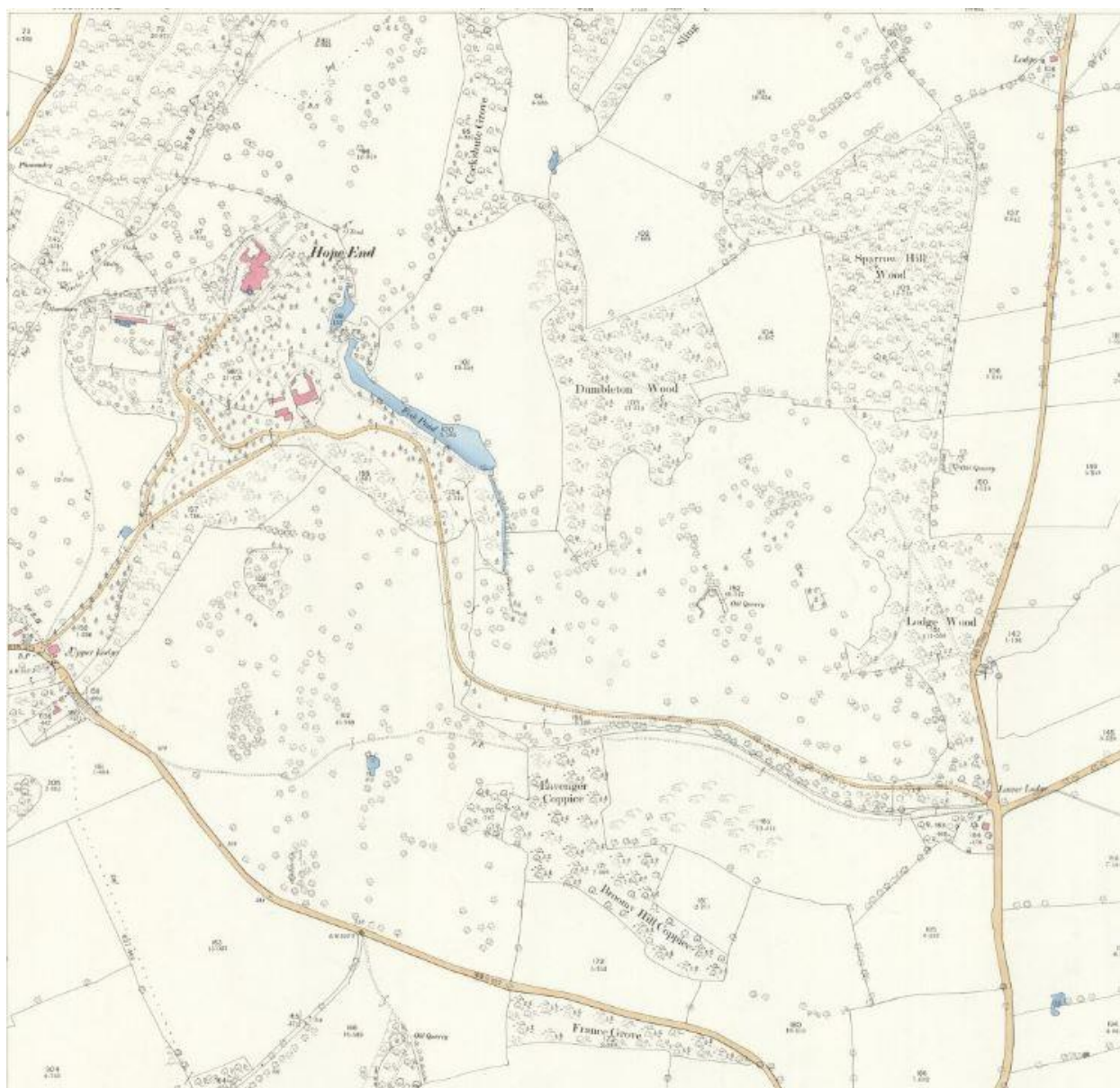


Fig 38 Detail from OS 1:2500 scale map, Herefordshire XXXVI.9, surveyed 1885
 Courtesy of National Library of Scotland

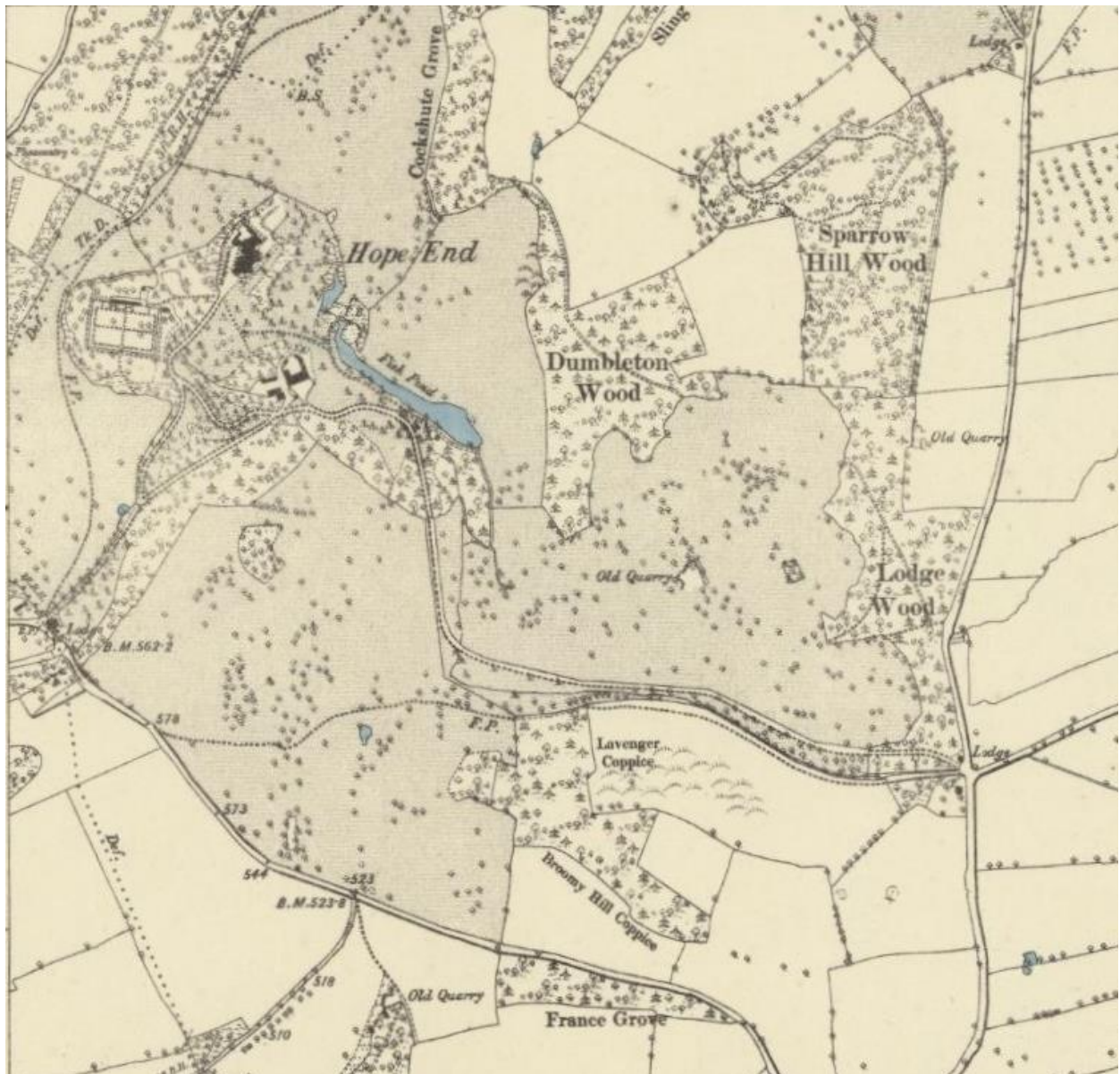


Fig 39 Detail from OS 6-inch map, Herefordshire XXXVI SW, surveyed 1886
Courtesy of National Library of Scotland

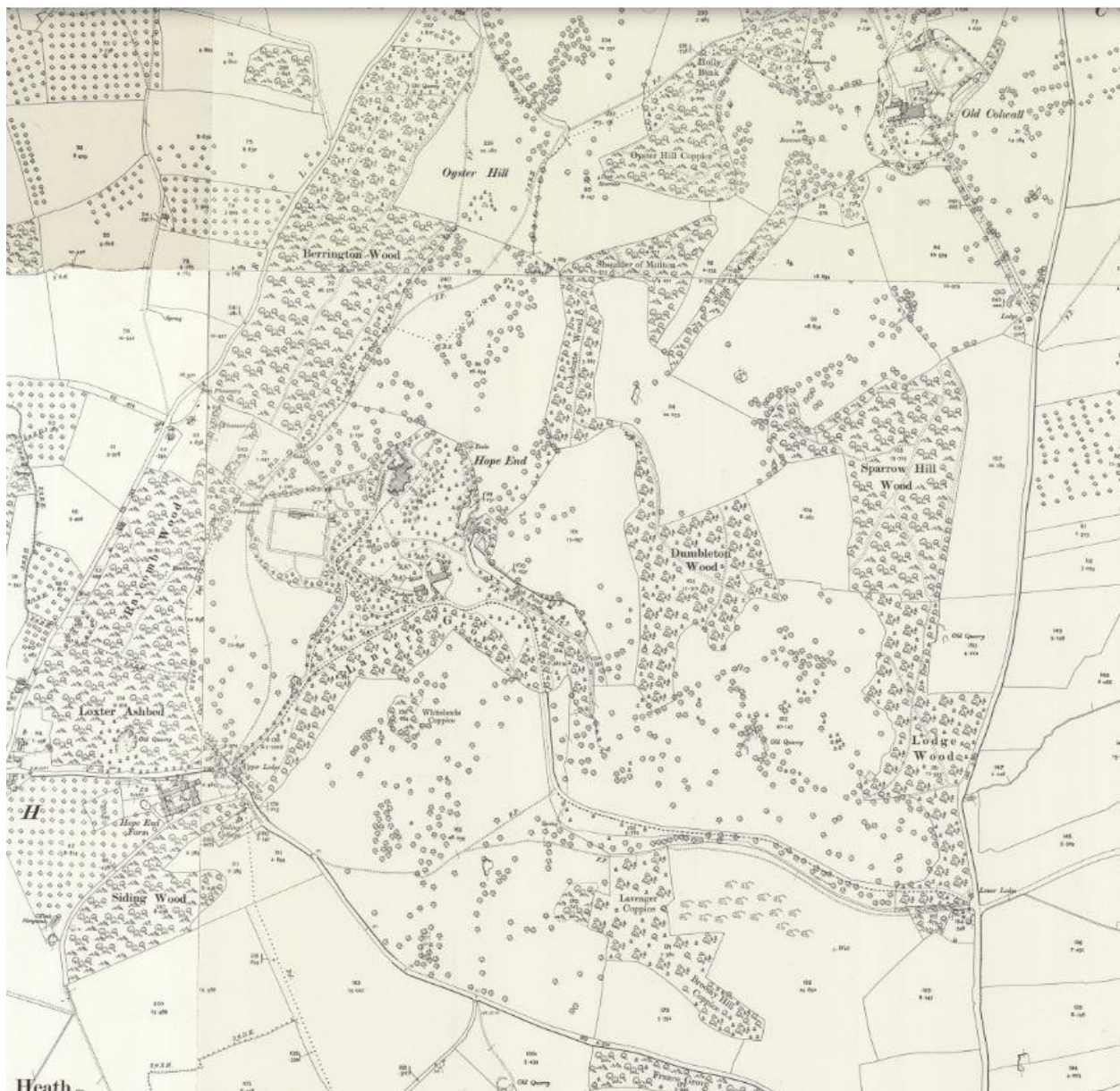


Fig 40 Detail from OS 1:2500 scale map, Herefordshire XXXVI.9, surveyed 1903
 Courtesy of National Library of Scotland

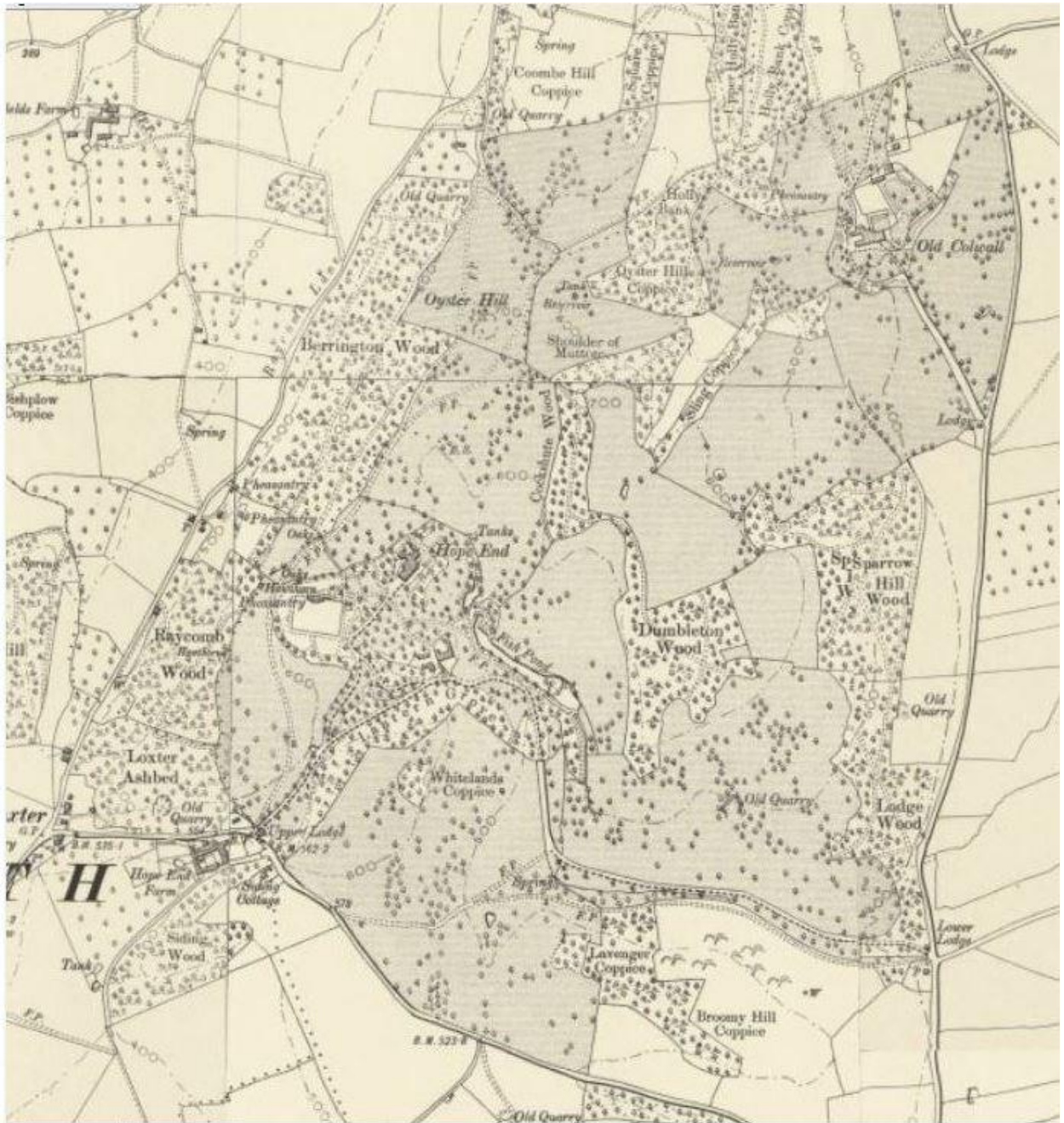


Fig 41 Detail from OS 6-inch map, Herefordshire XXXVI SW, revised 1903
 Courtesy of National Library of Scotland; the Old Colwall estate has also been stippled to represent parkland



Fig 42 Hope End House II, May 1910
 Courtesy of Patricia Hegarty



Fig 43 Hope End House II after the fire; the only part surviving is to the right
 Courtesy of Patricia Hegarty



Fig 44 Sales particulars plan, 1946
 Courtesy of Historic England, SB00325



Fig 45 The ruins of Hope End House II shortly before demolition, c.1947
 Courtesy of Patricia Hegarty



Fig 46 Dredging the lower end of the main pool c.1950
Courtesy of Patricia Hegarty



Fig 47 The stable block south elevation, 1947
Courtesy of Patricia Hegarty



Fig 48 Hope End 1, 1949
Courtesy of Patricia Hegarty



Fig 49 The abandoned fruit store in the former stable block, 1972
Courtesy of Patricia Hegarty



Fig 50 The rear of the stable block, 1947; Stephen Ballard II in the foreground
Courtesy of Patricia Hegarty



Fig 51 Hope End I, c. 1972
Courtesy of Patricia Hegarty

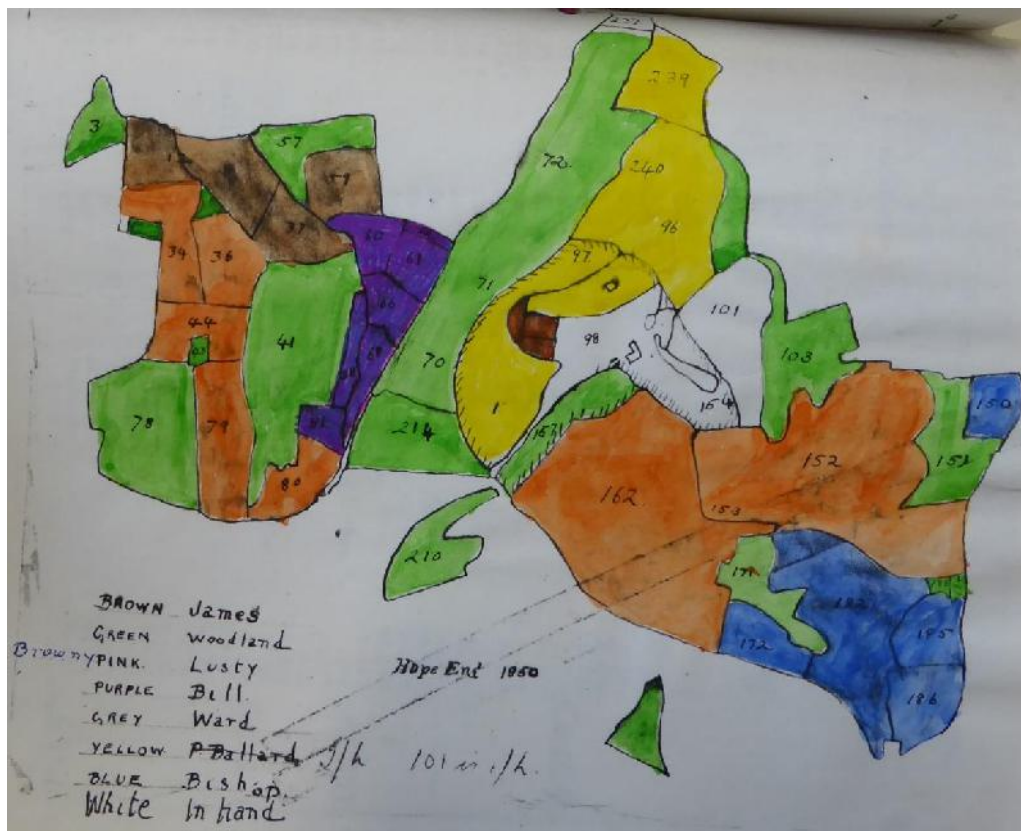


Fig 52 Stephen Ballard III's plan of the tenancies of the Hope End estate, early 1950s
 Courtesy of Hereford Archives and Research Centre, AW86/3



Fig 53 Sale particulars plan, 1957
 Courtesy of Historic England, SB00487



Fig 54 The north elevation and yard of the former stable block; the abandoned apple store is to the right; Padley family in residence to the left, 1972
Courtesy of Patricia Hegarty



Fig 55 Hope End House II, December 2021

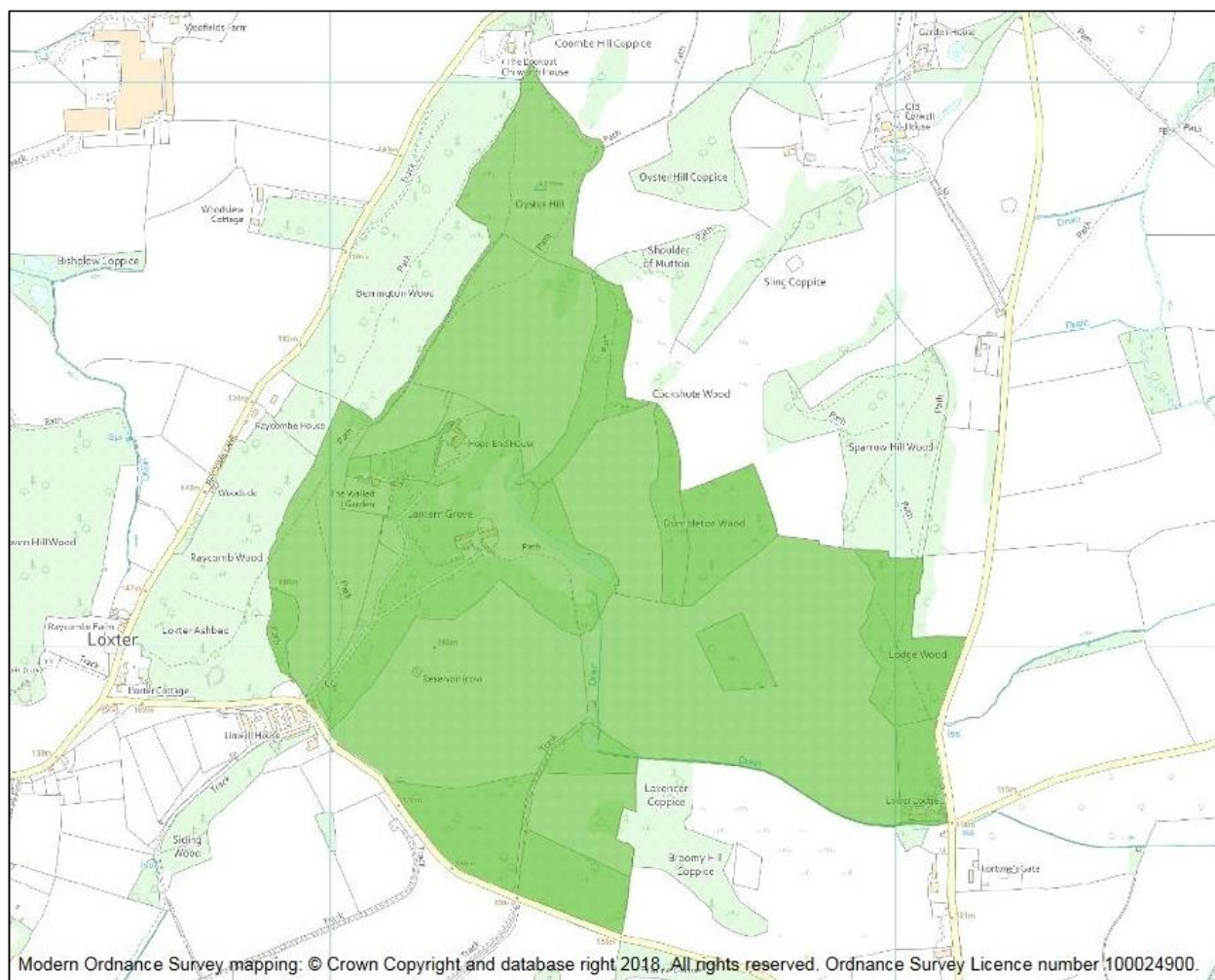


Fig 56 Plan of the registered park and garden, Hope End
Courtesy of Historic England

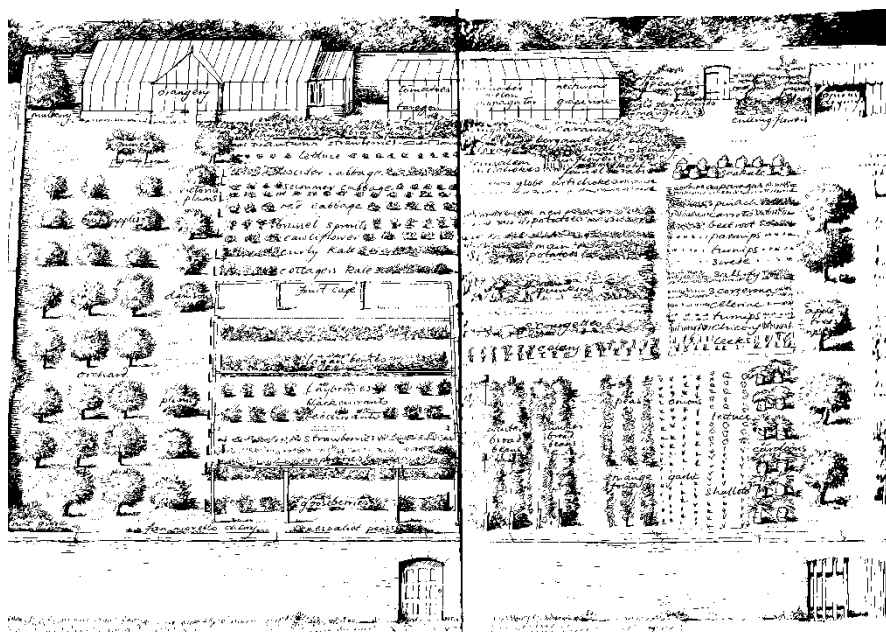


Fig 57 The layout of the walled kitchen garden, 1988
from Patricia Hegarty, *An English Flavour Recipes from Hope End*



Fig 58 The refurbished and re-fenestrated south elevation of the new Hope End Hotel 1977 (former stable and fruit store)
Courtesy of Patricia Hegarty



Fig 59 The re-fenestrated north elevation and north yard, 1977
Courtesy of Patricia Hegarty



Fig 60 The urns on the north yard gate post erected in the 1980s, Dec 2021



Fig 61 The alcove and pool in the north yard, 1990s?
Courtesy of John Hegarty



Fig 62 The construction of 'The Grotto' wall, 1980s
 Courtesy of John Hegarty



Fig 63 The 'plunge pool' refilled, 1980s
 Courtesy of John Hegarty



Fig 64 The scalloped bowl and dolphin December 2021

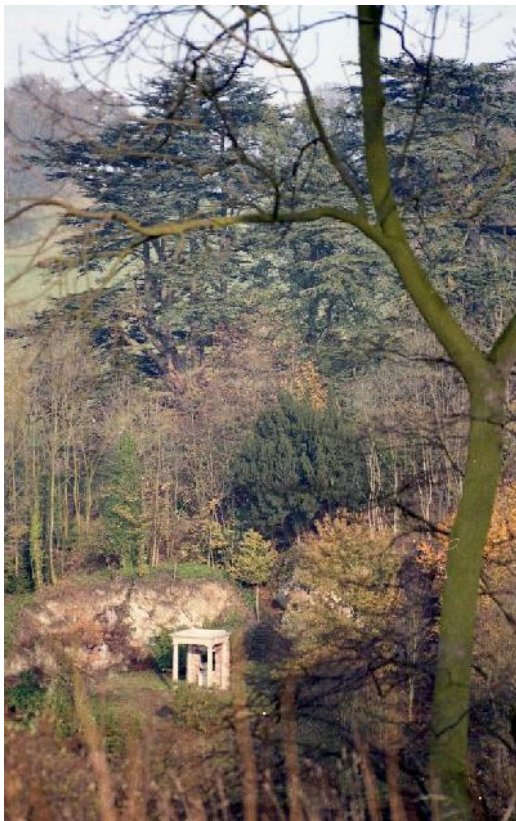


Fig 65 The Hegarty 'Temple', 1980s
Courtesy of John Hegarty



Fig 66 The 'Temple', December 2021



Fig 67 Stephen Ballard II beside the fallen tulip tree, 1947
 Courtesy of Patricia Hegarty



Fig 68 The overgrown park and garden, 1947 looking towards the stable block
 Courtesy of Patricia Hegarty

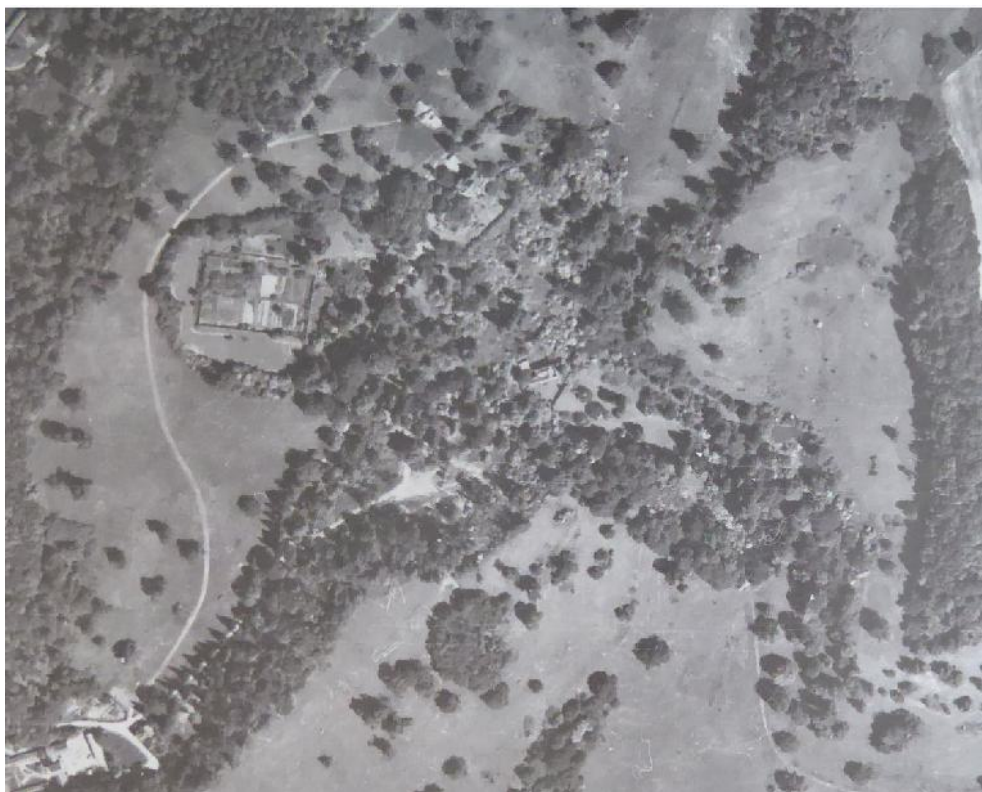


Fig 69 RAF vertical aerial photograph
Courtesy of HARC, CO35/3/363



Fig 70 Google Earth vertical aerial photograph, 1999



Fig 71 The walled kitchen garden and house (c. 2005), December 2021



Fig 72 Google Earth vertical aerial photograph, May 2020;
new plantations outlined in red